



SUMPS & TRAPS INDEX

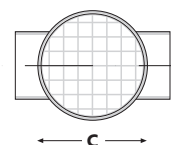
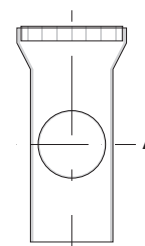
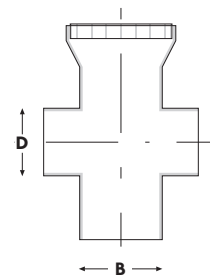
PVC Silt Traps Round c/w PVC Grate	2.1
Polyethylene Silt Traps	2.2
Cable Pit	2.3
Electrical Pits	2.3
Grease Traps – Polyethylene	2.4
Inspection Dry Chamber	2.7
Distribution Box	2.9
Distribution Box – Even Flow	2.9
Rainwater Diversion Valve	2.9
Splitter Valve	2.10
Distribution Box – Risers / Lid	2.10



PVC SILT TRAPS ROUND C/W PVC GRATE

Indicate outlet size at end of code - i.e: 90 or 100

Code	Description	A	B	C	D
750.100	100mm – No Outlet	280	90	145	-
750.100S.90	100mm c/w – 90 Outlet	284	110	147	90
750.100D.90	100mm – Dble 90 Outlets	285	110	146	90
750.150	150mm – No Outlet	384	160	208	
750.150S.90	150mm – 90 Outlet	384	160	208	90
750.150S.100	150mm – 100 Outlet	384	160	208	110
750.150D.90	150mm – Dble 90 Outlets	388	160	200	90
750.150D.100	150mm – Dble 100 Outlets	388	160	200	110



POLYETHYLENE SILT TRAPS

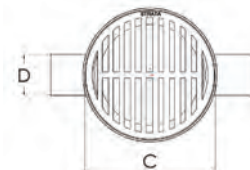
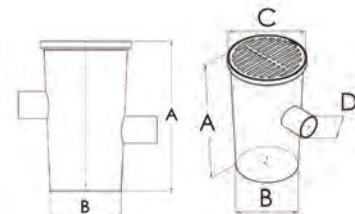
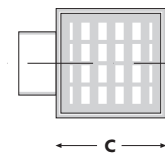
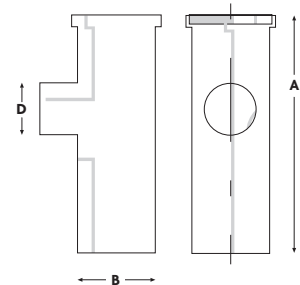
Code	Description	A	B	C	D
750.200SQ	200mm x 500mm Square c/w PVC Grate – One Outlet	500	162	196	110
750.250R	250mm x 500mm Round c/w PVC Grate – One Outlet	525	265	290	110
750.250SQ	250mm x 500mm Square c/w PVC Grate – One Outlet	500	250	291	110
750.250SQA	250mm x 500mm Square c/w Alloy Grate – One Outlet	500	250	291	110
752.250	100mm Syphon	287	100	182	100
753.250R	250mm x 300mm High Round Riser	337	272	289	-
750.300R	300mm x 600mm Round c/w # CI Grate – One Outlet	600	275	368	110
750.300RS	300mm x 600mm Round c/w CI Grate & Syphon – One Outlet	#	600	275	368
750.300R-D	300mm x 600mm Round c/w CI Grate – Double Outlet	600	275	368	110
750.300SQ	300mm x 600mm Square c/w CI Grate – One Outlet	*	610	320	308
750.300SQS	300mm x 600mm Square c/w CI Grate & Syphon – One Outlet	*	610	320	308
750.300SQ-D	300mm x 600mm Square c/w CI Grate – Double Outlet	610	320	308	110
752.300	100mm Syphon	287	100	182	100
753.300R	300mm x 300mm High Round Riser	353	353	380	-
753.300SQ	300mm x 400mm High Square Riser	420	295	315	
750.450.400	450 x 400 Square Silt Trap c/w Galv Steel Grate	^	400	400	473
750.450.690	450 x 690 Square Silt Trap c/w Galv Steel Grate	^	690	400	473
750.450.1	450 x 1000 Square Silt Trap c/w Galv Steel Grate	^	1000	400	473
					2x160 1x110 1x200

Replacement grates available

Cast iron grate load tested to 8 ton

* Cast iron grate load tested to 3 ton

^ Steel grate load tested to 5 ton



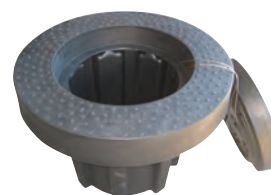
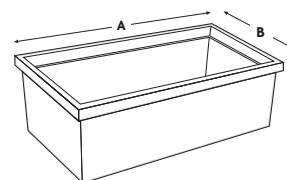
CABLE PIT

Code	Description	A	B	C
758.200	200mm x 200mm Square Cable Box c/w Lid	200	200	200
758.300	300mm x 300mm Square Cable Box c/w Lid	300	300	300
758.400	400mm x 400mm Square Cable Box c/w Lid	400	400	400
758.500	500mm x 500mm Square Cable Box c/w Lid	500	500	500



ELECTRICAL PITS

Code	Description	A	B	C
PITVP0151	Infrastructure Service Pit c/w Lockable Lid	515	235	400
PITVP0152	Infrastructure Service Pit c/w Lockable Lid	660	285	570
PITVP0153	Infrastructure Service Pit c/w Lockable Lid	780	345	630
PITVP0154	Infrastructure Service Pit c/w Lockable Lid	710	400	830
PITUG2005	Infrastructure Service Pit c/w Lockable Lid	710	455	650
PITUG2006	Infrastructure Service Pit c/w Lockable Lid	1365	550	670
PITUG2007	Infrastructure Service Pit c/w Lockable Lid	1020	550	1130
PITUG2008	Infrastructure Service Pit c/w Lockable Lid	1365	545	895
PITUG2009	Infrastructure Service Pit c/w Lockable Lid	2040	585	900
PITUG2001	Infrastructure Service Pit c/w Lockable Lid	515	235	400
PITUG2002	Infrastructure Service Pit c/w Lockable Lid	660	285	570
PITUG2003	Infrastructure Service Pit c/w Lockable Lid	780	345	630
PITUG2004	Infrastructure Service Pit c/w Lockable Lid	710	400	830
PITVP0155	Infrastructure Service Pit c/w Lockable Lid	713	453	630
PITUG2031	Gas Service Pit c/w Lockable lid	460	400	355
PITUG2032	Gas Service Pit c/w Lockable lid	560	460	450
PITUG2033	Gas Service Pit c/w Lockable lid	700	550	700
PITWA1520	Collared Hydrant Pit c/w Lid	610 dia	610 dia	420
PITWA1501	Hydrant Pit c/w Lid	435 dia	435 dia	420
PITWA1506	Flushing Box c/w Lid	585	375	355
PITWA1504	Rural Valve Pit c/w Lid	435 dia	435 dia	745
PITWA1520S	Collared Hydrant Pit c/w Snap Lid	610 dia	610 dia	420
PITWA1501S	Hydrant Pit c/w Snap Lid	435 dia	435 dia	420
PITWA1504S	Rural Valve Pit c/w Snap Lid	435 dia	435 dia	745
PITUG2022	Electrical Service Pit c/w Lid	435 dia	435 dia	620



Some electrical pits are non stock and are indented on placement of an order

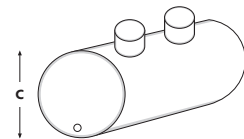
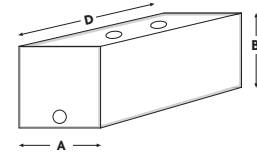
GREASE TRAPS – POLYETHYLENE

Manufactured to comply with the building codes G13/AS2 Section 4.0 for foul water drainage

Made of rigid LDPE Polyethylene, Strata grease traps are suitable for use in in-ground applications where there is to be no direct traffic loading on the chamber. Roto-moulded Polyethylene is suitable for use in applications where the maximum constant temperature is 65°C and can handle cooking oils, fats, motor oils, detergents, soaps and diesel.

Acceptable Solution (G13/AS2)

- 3.4.1 Grease traps shall be provided for any discharge pipe serving a sink(s) where foul water discharges, to a soak pit.
- 3.4.2 Grease traps shall be provided, in buildings and other housing, where waste water is likely to convey grease.
- 3.4.3 The capacity of the grease trap shall be at least twice the capacity of all sanitary fixtures and sanitary appliances discharging to it, and in no case less than 100 litres.
- 3.4.4 For restaurants and cafes, the capacity of grease traps shall be at least 5 litres for each person for whom seating is provided and in no case less than that required by paragraph 3.4.3.



Code	Size	Fitting	A	B	C	D
GT50	50 litre ** c/w Adapters to 65mm DWV	75mm	390	300		600
GT100	100 litre **	100mm	510	410		800
GT150	150 litre **	100mm	570	540		940
GT200	200 litre	100mm	900	600		850
GT250	250 litre **	100mm	530	580		1017
GT500	500 litre c/w 2x 345mm Cast Iron Cover & Frame	100mm	1105	900	900	1500

Please note outlet size where required.

Other size outlets available on request.

** Not load capable.

GT50

Manufactured from Polyethylene using the roto-moulding process.

The Strata Precision Plastics Ltd GT50 is manufactured for under sink only.

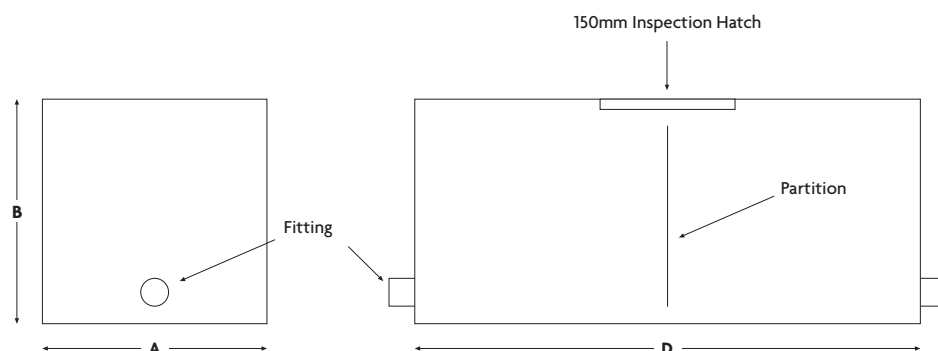
Connection to the GT50 is by way of 2 x 75mm Polyethylene RRJ connectors and an iplex PVC to PE adapter.

Entrance is through a sealed 150mm inspection hatch, similar to those used in the marine industry.

Dimensions for the GT50 are 600mm long x 390mm wide x 300mm high. A partition is centrally located along the GT50 and is located to ensure it controls any volume of water coming in from the inlet.

Once placed in position, it is recommended that straps are located over the GT50 to ensure there is minimal movement during any water cycle. Polyethylene is prone to extreme expansion and contraction, therefore every effort should be made to hold the GT50 in a controlled location.

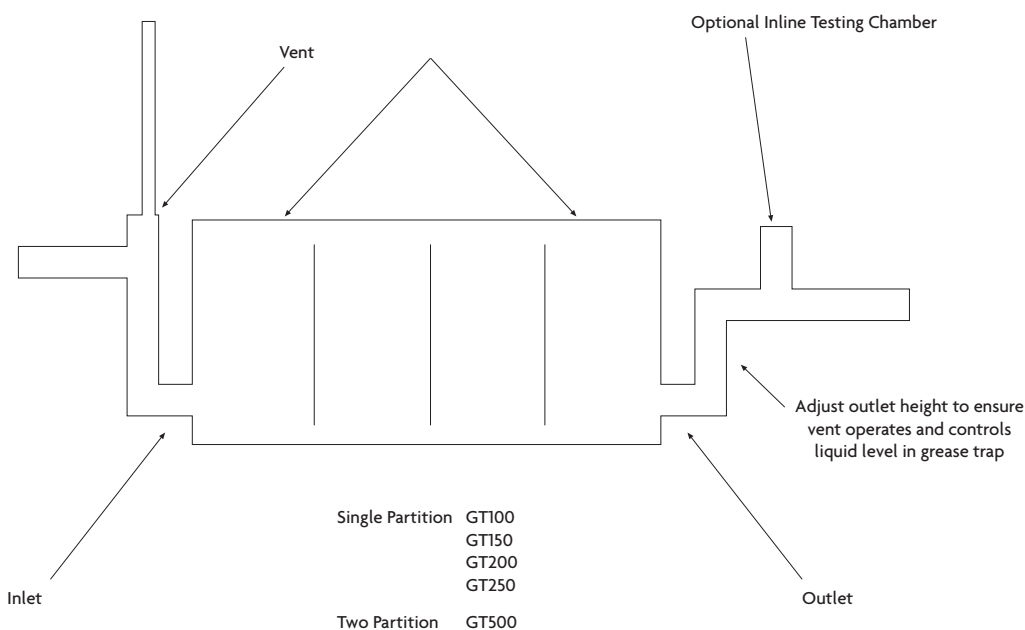
When connecting to the GT50, ensure the height of the inlet is higher than the outlet pipe.



Installation of grease traps for in-ground applications – 100 litre, 150 litre, 200 litre, 250 litre and 500 litre

All Strata grease traps suitable for in-ground use are fitted with a 110mm RRJ inlet and outlet, suitable for use with 110mm OD PVC or Polyethylene.

1. Excavate hole to suit the relevant grease trap and related pipe work.
2. Prepare bedding in the base of the hole, using a layer suitable compacting material, i.e. pit sand.
3. Place the grease trap in position and fill the chamber to half fill with water.
4. Fit and complete the installation of all associated pipe work. The inlet and outlet heights determine the liquid height in the grease trap. Ensure the height of the inlet is higher than the outlet pipe. This ensures the pipe line does not back flow. As a minimum, install an air vent that meets local body requirements.
5. If the grease trap has been installed in a traffic area, ensure all sides are of solid earth and a minimum of 200mm has been maintained from the tank walls.
6. Backfill around the tank using clean suitable compacting material, i.e. pit sand.
7. Strata grease traps are not suitable for direct loading and it is therefore important to ensure any top loading is eliminated.
8. Some local authorities may require sampling chambers be installed. If required, contact Strata for available options.



INSPECTION DRY CHAMBER

Options available:

100mm Threaded hatch No1

150mm Threaded Inspection base No2

100mm Standard Inspection fitting No3

150mm Standard Inspection fitting No4

100mm Marley Bayonet Inspection fitting c/w adaptor

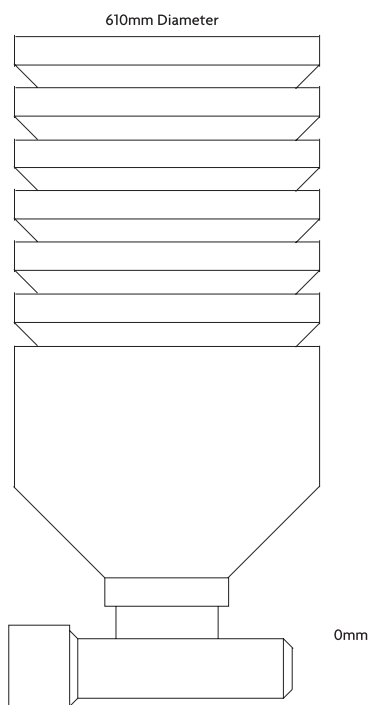
Code	Size	Thread	Height	A	B	C	D
DC1014	100mm	No 1	400mm		610		
DC1524	150mm	No 2	400mm		610		
DC1034	100mm	No 3	400mm		610		
DC1044	150mm	No 4	400mm		610		
DC10169	100mm	No 1	690mm		610		
DC15269	150mm	No 2	690mm		610		
DC10369	100mm	No 3	690mm		610		
DC15469	150mm	No 4	690mm		610		
DC10197	100mm	No 1	970mm		610		
DC15297	150mm	No 2	970mm		610		
DC10397	100mm	No 3	970mm		610		
DC15497	150mm	No 4	970mm		610		
DCM104	Marley Thread	-	400mm		610		
DCM1069	Marley Thread	-	690mm		610		
DCM1097	Marley Thread	-	970mm		610		

For: Sewer or Stormwater

(Manufactured from Polyethylene)

- * Height trimmed to suit
- * Threads to suit Iplex and Marley fittings
- * 100mm or 150mm diameter Hatch

Iplex Thread or Marley Bayonet connection





Code	Description	A	B	C	D
DC00.110	610mm x 970mm Inspection Chamber – Straight Through	970		610	
DC00.160	610mm x 970mm Inspection Chamber – Straight Through	970		610	
DC00.225	610mm x 970mm Inspection Chamber – Straight Through	970		610	
DC04.110.45LH	610mm x 970mm Inspection Chamber – Wye Junction – Left Hand	970		610	
DC04.110.45RH	610mm x 970mm Inspection Chamber – Wye Junction – Right Hand	970		610	
DC04.160.45LH	610mm x 970mm Inspection Chamber – Wye Junction – Left Hand	970		610	
DC04.160.45RH	610mm x 970mm Inspection Chamber – Wye Junction – Right Hand	970		610	
DC04.160.110.45LH	610mm x 970mm Inspection Chamber – Wye Junction – Left Hand	970		610	
DC04.160.110.45RH	610mm x 970mm Inspection Chamber – Wye Junction – Right Hand	970		610	

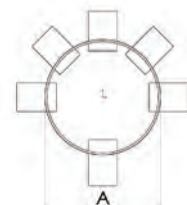
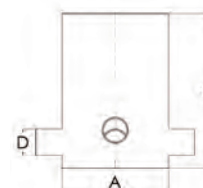
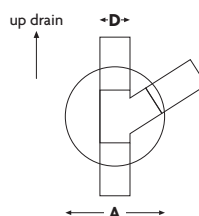
Both chamber types are manufactured to have standard light duty cast iron frames and lids installed on top

3702

DISTRIBUTION BOX

Code	Description	A	B	C	D
3702.100.W.	100mm 2 Way Wye	465	655		100
3702.150.W.	150mm 2 Way Wye	465	655		150
3702.100.T.	100mm 2 Way Tee	465	655		100
3702.150.T.	150mm 2 Way Tee	465	655		150
3703.100	100mm 3 Way	465	655		100
3703.150	150mm 3 Way	465	655		150

100mm Distribution boxes are no longer a stock item and have been replaced by our range of even flo units. When ordering please detail if you want **left** or **right** hand (looking up the drain)



3703

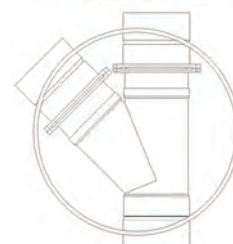
DISTRIBUTION BOX – EVEN FLOW

Code	Description	A	B	C	D
300 Ø Chamber – Includes Lid					
3703.100/90EFLO	90mm or 100mm 3 Way	300	900		90/110
450 Ø Chamber					
3700.100EFLO&LID	100mm Multi Outlet to 5 Way	465	655	465	110
3706.100EFLO&LID	100mm 6 Way	465	655	465	110

3702

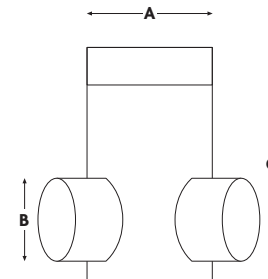
RAINWATER DIVERSION VALVE

Code	Description	A	B	C	D
3702.150W.Slide	150mm Rainwater – 2 Way Wye – Left or Right Hand	465	655		160



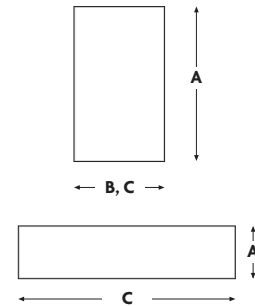
SPLITTER VALVE

Code	Description	A	B	C	D
3700.Split/100	100mm Distribution Valve 3 Way	166	110	308	
3700.Split/150	150mm Distribution Valve 3 Way	205	160	336	
3700.Split/175	175mm Distribution Valve 3 Way	255	200	500	
3700.Split/225	225mm Distribution Valve 3 Way	320	250	620	
3700.Split/300	300mm Distribution Valve 3 Way	405	315	690	



DISTRIBUTION BOX – RISERS / LID

Code	Description	A	B	C	D
500.450	Distribution Box Riser 450mm x 600mm	655	465	465	
520.450	Distribution Box Lid 450mm	70	485	465	


3700
500