



SUMPS & TRAPS INDEX

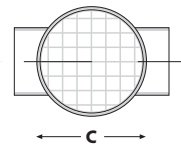
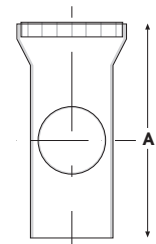
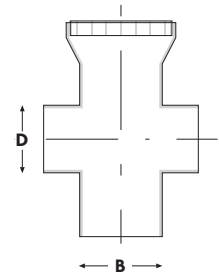
PVC Silt Traps Round c/w PVC Grate	2.1
Polyethylene Silt Traps	2.2
Cable Pit	2.3
Electrical Pits	2.3
Grease Traps – Polyethylene	2.4
Inspection Dry Chamber	2.6
Distribution Box – Even Flow	2.8
Rainwater Diversion Valve	2.8
Splitter Valve	2.9
Distribution Box – Risers / Lid	2.9



PVC SILT TRAPS ROUND C/W PVC GRATE

Indicate outlet size at end of code - i.e: 90 or 100

CODE	DESCRIPTION	A	B	C	D
750.100	100mm – No Outlet	280	90	145	-
750.100S.90	100mm c/w – 90 Outlet	284	110	147	90
750.100D.90	100mm – Dble 90 Outlets	285	110	146	90
750.150	150mm – No Outlet	384	160	208	
750.150S.90	150mm – 90 Outlet	384	160	208	90
750.150S.100	150mm – 100 Outlet	384	160	208	110
750.150D.90	150mm – Dble 90 Outlets	388	160	200	90
750.150D.100	150mm – Dble 100 Outlets	388	160	200	110

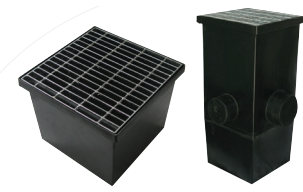
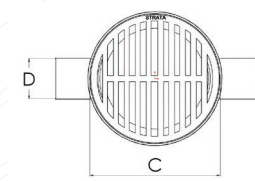
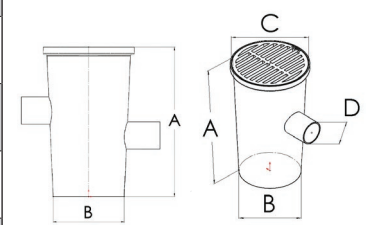
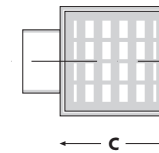
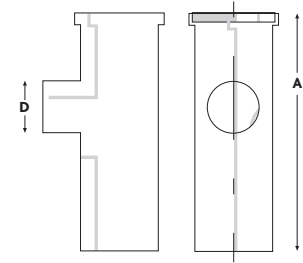




750

POLYETHYLENE SILT TRAPS

CODE	DESCRIPTION		A	B	C	D
750.200SQ	200mm x 500mm Square c/w PVC Grate – One Outlet		500	162	196	110
750.250R	250mm x 500mm Round c/w PVC Grate – One Outlet		525	265	290	110
750.250SQ	250mm x 500mm Square c/w PVC Grate – One Outlet		500	250	291	110
750.250SQA	250mm x 500mm Square c/w Alloy Grate – One Outlet		500	250	291	110
752.250	100mm Syphon		287	100	182	100
753.250R	250mm x 300mm High Round Riser		337	272	289	-
750.300R	300mm x 600mm Round c/w CI Grate – One Outlet	#	600	275	368	110
750.300RS	300mm x 600mm Round c/w CI Grate & Syphon – One Outlet	#	600	275	368	110
750.300R-D	300mm x 600mm Round c/w CI Grate – Double Outlet		600	275	368	110
750.300SQ	300mm x 600mm Square c/w CI Grate – One Outlet	*	610	320	308	110
750.300SQS	300mm x 600mm Square c/w CI Grate & Syphon – One Outlet	*	610	320	308	110
750.300SQ-D	300mm x 600mm Square c/w CI Grate – Double Outlet		610	320	308	110
752.300	100mm Syphon		287	100	182	100
753.300R	300mm x 300mm High Round Riser		353	353	380	-
753.300SQ	300mm x 400mm High Square Riser		420	295	315	
750.450.400	450 x 400 Square Silt Trap c/w Galv Steel Grate	^	400	400	473	
750.450.690	450 x 690 Square Silt Trap c/w Galv Steel Grate	^	690	400	473	
750.450.1	450 x 1000 Square Silt Trap c/w Galv Steel Grate	^	1000	400	473	2x160 1x110 1x200



752
753

Replacement grates available
 # Cast iron grate load tested to 8 ton
 * Cast iron grate load tested to 3 ton
 ^ Steel grate load tested to 5 ton

SUMPS & TRAPS



758

CABLE PIT



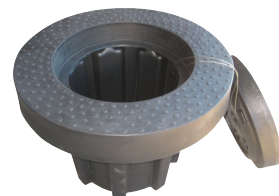
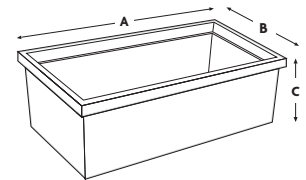
CODE	DESCRIPTION	A	B	C
758.200	200mm x 200mm Square Cable Box c/w Lid	200	200	200
758.300	300mm x 300mm Square Cable Box c/w Lid	300	300	300
758.400	400mm x 400mm Square Cable Box c/w Lid	400	400	400
758.500	500mm x 500mm Square Cable Box c/w Lid	500	500	500

PIT

ELECTRICAL PITS



CODE	DESCRIPTION	A	B	C
PITVP0151	Infrastructure Service Pit c/w Lockable Lid	515	235	400
PITVP0152	Infrastructure Service Pit c/w Lockable Lid	660	285	570
PITVP0153	Infrastructure Service Pit c/w Lockable Lid	780	345	630
PITVP0154	Infrastructure Service Pit c/w Lockable Lid	710	400	830
PITUG2005	Infrastructure Service Pit c/w Lockable Lid	710	455	650
PITUG2006	Infrastructure Service Pit c/w Lockable Lid	1365	550	670
PITUG2007	Infrastructure Service Pit c/w Lockable Lid	1020	550	1130
PITUG2008	Infrastructure Service Pit c/w Lockable Lid	1365	545	895
PITUG2009	Infrastructure Service Pit c/w Lockable Lid	2040	585	900
PITUG2001	Infrastructure Service Pit c/w Lockable Lid	515	235	400
PITUG2002	Infrastructure Service Pit c/w Lockable Lid	660	285	570
PITUG2003	Infrastructure Service Pit c/w Lockable Lid	780	345	630
PITUG2004	Infrastructure Service Pit c/w Lockable Lid	710	400	830
PITVP0155	Infrastructure Service Pit c/w Lockable Lid	713	453	630
PITUG2031	Gas Service Pit c/w Lockable lid	460	400	355
PITUG2032	Gas Service Pit c/w Lockable lid	560	460	450
PITUG2033	Gas Service Pit c/w Lockable lid	700	550	700
PITWA1520	Collared Hydrant Pit c/w Lid	610 dia	610 dia	420
PITWA1501	Hydrant Pit c/w Lid	435 dia	435 dia	420
PITWA1506	Flushing Box c/w Lid	585	375	355
PITWA1504	Rural Valve Pit c/w Lid	435 dia	435 dia	745
PITWA1520S	Collared Hydrant Pit c/w Snap Lid	610 dia	610 dia	420
PITWA1501S	Hydrant Pit c/w Snap Lid	435 dia	435 dia	420
PITWA1504S	Rural Valve Pit c/w Snap Lid	435 dia	435 dia	745
PITUG2022	Electrical Service Pit c/w Lid	435 dia	435 dia	620



SUMPS & TRAPS

Some electrical pits are non stock and are indented on placement of an order

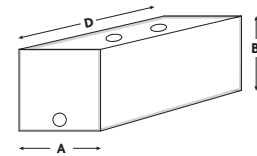


GT

GREASE TRAPS – POLYETHYLENE

Manufactured to comply with the building codes G13/AS2 Section 4.0 for foul water drainage

Made of rigid LDPE Polyethylene, Strata grease traps are suitable for use in in-ground applications where there is to be no direct traffic loading on the chamber. Roto-moulded Polyethylene is suitable for use in applications where the maximum constant temperature is 65°C and can handle cooking oils, fats, motor oils, detergents, soaps and diesel.



Acceptable Solution (G13/AS2)

- 3.4.1 Grease traps shall be provided for any discharge pipe serving a sink(s) where foul water discharges, to a soak pit.
- 3.4.2 Grease traps shall be provided, in buildings and other housing, where waste water is likely to convey grease.
- 3.4.3 The capacity of the grease trap shall be at least twice the capacity of all sanitary fixtures and sanitary appliances discharging to it, and in no case less than 100 litres.
- 3.4.4 For restaurants and cafes, the capacity of grease traps shall be at least 5 litres for each person for whom seating is provided and in no case less than that required by paragraph 3.4.3.

CODE	SIZE	FITTING	A	B	C	D
GT125	125 litre	100mm	295	625		950
GT375	375 litre	100mm	665	800		1190
GT1000	1000 litre	100mm	1400	792		1400
GT500	500 litre c/w 2x 345mm Cast Iron Cover & Frame	100mm	660	965		1175

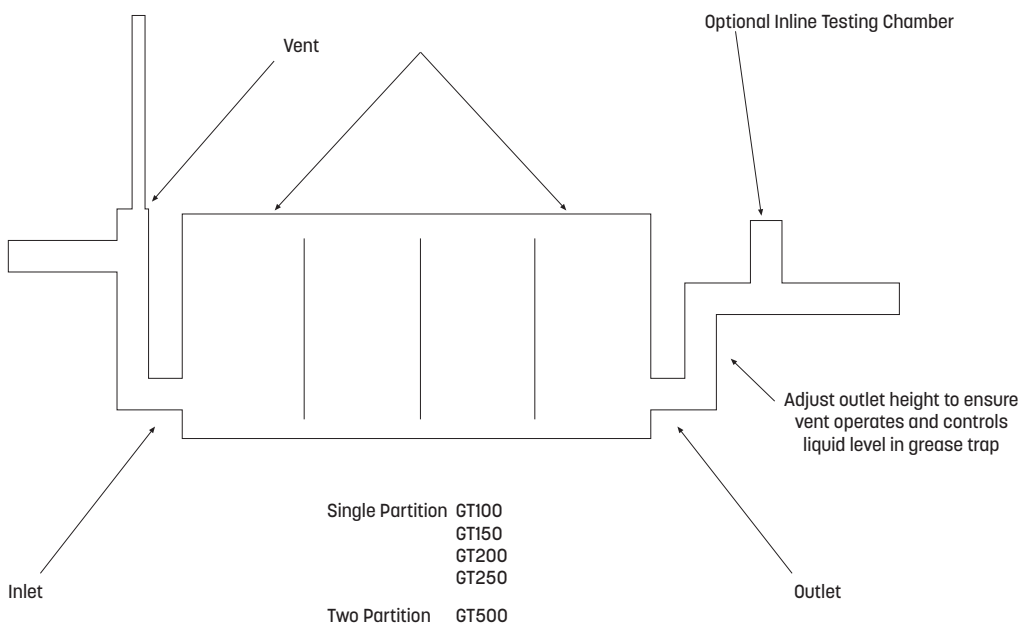
Please note outlet size where required
Other size outlets available on request
** Not load capable



Installation of grease traps for in-ground applications – 125 litre, 375 litre and 500 litre

All Strata grease traps suitable for in-ground use are fitted with a 110mm RRJ inlet and outlet, suitable for use with 110mm OD PVC or Polyethylene.

1. Excavate hole to suit the relevant grease trap and related pipe work.
2. Prepare bedding in the base of the hole, using a layer suitable compacting material, i.e. pit sand.
3. Place the grease trap in position and fill the chamber to half fill with water.
4. Fit and complete the installation of all associated pipe work. The inlet and outlet heights determine the liquid height in the grease trap. Ensure the height of the inlet is higher than the outlet pipe. This ensures the pipe line does not back flow. As a minimum, install an air vent that meets local body requirements.
5. If the grease trap has been installed in a traffic area, ensure all sides are of solid earth and a minimum of 200mm has been maintained from the tank walls.
6. Backfill around the tank using clean suitable compacting material, i.e. pit sand.
7. Strata grease traps are not suitable for direct loading and it is therefore important to ensure any top loading is eliminated.
8. Some local authorities may require sampling chambers be installed. If required, contact Strata for available options.





INSPECTION DRY CHAMBER

Options available:

- 100mm Threaded hatch No1
- 150mm Threaded Inspection base No2
- 100mm Standard Inspection fitting No3
- 150mm Standard Inspection fitting No4
- 100mm Marley Bayonet Inspection fitting c/w adaptor

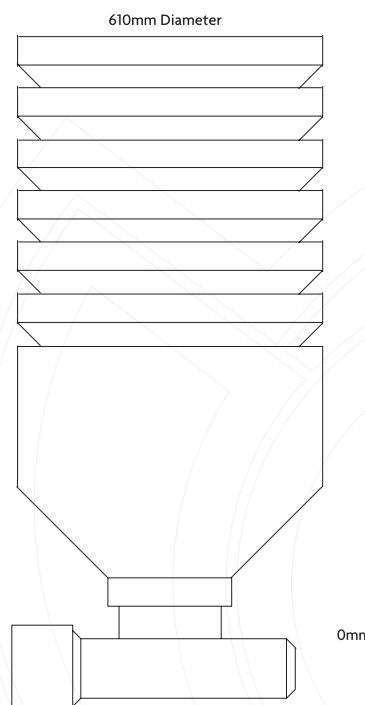
CODE	SIZE	THREAD	HEIGHT	A	B	C	D
DC1014	100mm	No 1	400mm		610		
DC1524	150mm	No 2	400mm		610		
DC1034	100mm	No 3	400mm		610		
DC1044	150mm	No 4	400mm		610		
DC10169	100mm	No 1	690mm		610		
DC15269	150mm	No 2	690mm		610		
DC10369	100mm	No 3	690mm		610		
DC15469	150mm	No 4	690mm		610		
DC10197	100mm	No 1	970mm		610		
DC15297	150mm	No 2	970mm		610		
DC10397	100mm	No 3	970mm		610		
DC15497	150mm	No 4	970mm		610		
DCM104	Marley Thread	-	400mm		610		
DCM1069	Marley Thread	-	690mm		610		
DCM1097	Marley Thread	-	970mm		610		

For: Sewer or Stormwater

(Manufactured from Polyethylene)

- * Height trimmed to suit
- * Threads to suit Iplex and Marley fittings
- * 100mm or 150mm diameter Hatch

Iplex Thread or Marley Bayonet connection



INSPECTION DRY CHAMBER

Options available:

- 100mm Threaded hatch No1
- 150mm Threaded Inspection base No2
- 100mm Standard Inspection fitting No3
- 150mm Standard Inspection fitting No4
- 100mm Marley Bayonet Inspection fitting c/w adaptor



CODE	DESCRIPTION	A	B	C	D
DC00.110	610mm x 970mm Inspection Chamber – Straight Through	970		610	
DC00.160	610mm x 970mm Inspection Chamber – Straight Through	970		610	
DC00.225	610mm x 970mm Inspection Chamber – Straight Through	970		610	
DC04.110.45LH	610mm x 970mm Inspection Chamber – Wye Junction – Left Hand	970		610	
DC04.110.45RH	610mm x 970mm Inspection Chamber – Wye Junction – Right Hand	970		610	
DC04.160.45LH	610mm x 970mm Inspection Chamber – Wye Junction – Left Hand	970		610	
DC04.160.45RH	610mm x 970mm Inspection Chamber – Wye Junction – Right Hand	970		610	
DC04.160.110.45LH	610mm x 970mm Inspection Chamber – Wye Junction – Left Hand	970		610	
DC04.160.110.45RH	610mm x 970mm Inspection Chamber – Wye Junction – Right Hand	970		610	

Both chamber types are manufactured to have standard light duty cast iron frames and lids installed on top

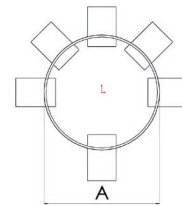
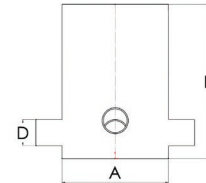


DISTRIBUTION BOX – EVEN FLOW

CODE	DESCRIPTION	A	B	C	D
300 Ø Chamber – Includes Lid					
3703.100/90EFLO	90mm or 100mm 3 Way	300	900		90/110
450 Ø Chamber					
3700.100EFLO&LID	100mm Multi Outlet to 5 Way	465	655	465	110
3706.100EFLO&LID	100mm 6 Way	465	655	465	110



3703

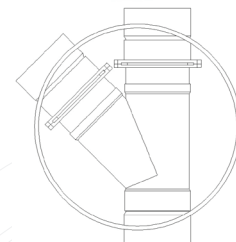
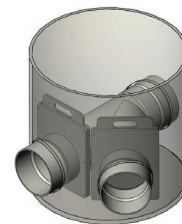


RAINWATER DIVERSION VALVE

CODE	DESCRIPTION	A	B	C	D
3702.150W.Slide	150mm Rainwater – 2 Way Wye – Left or Right Hand	465	655		160



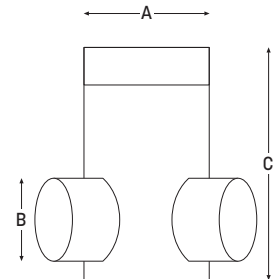
3702



3700

SPLITTER VALVE

CODE	DESCRIPTION	A	B	C	D
3700.Split/100	100mm Distribution Valve 3 Way	166	110	308	
3700.Split/150	150mm Distribution Valve 3 Way	205	160	336	
3700.Split/175	175mm Distribution Valve 3 Way	255	200	500	
3700.Split/225	225mm Distribution Valve 3 Way	320	250	620	
3700.Split/300	300mm Distribution Valve 3 Way	405	315	690	



500

DISTRIBUTION BOX – RISERS / LID

CODE	DESCRIPTION	A	B	C	D
500.450	Distribution Box Riser 450mm x 600mm	655	465	465	
520.450	Distribution Box Lid 450mm	70	485	465	

