



RURAL INDEX

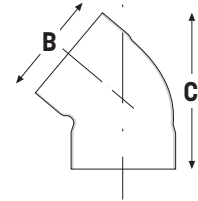
| | |
|--|-----|
| Farmtuff Bends | 8.1 |
| Farmtuff Junctions | 8.1 |
| Floodgates – PVC | 8.2 |
| Floodgates – Concrete – PVC | 8.2 |
| Floodgates – Concrete – PE | 8.2 |
| Slide Valve | 8.3 |
| Wingwalls | 8.3 |
| HDPE Slotted Effluent Pipe® | 8.4 |
| Standard Slot Configuration | 8.4 |
| Distribution Box – Even Flow | 8.4 |
| Distribution Box – Risers / LID | 8.5 |
| Splitter Valve | 8.5 |
| Rainwater Diversion Valve | 8.5 |
| Sprinkler Surround – Effluent or Water | 8.6 |
| Stub Flanges | 8.6 |
| Flood Wash Systems | 8.7 |



701
551

FARMTUFF BENDS

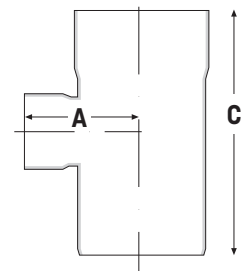
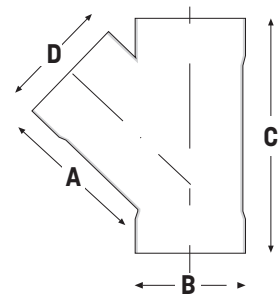
| CODE | DESCRIPTION | A | B | C | D |
|--------------|-------------|---|-----|-----|---|
| 701m.175.45° | Moulded | | 200 | 260 | |
| 701m.175.88° | Moulded | | 200 | 305 | |
| 701m.225.45° | Moulded | | 250 | 370 | |
| 701m.225.88° | Moulded | | 250 | 410 | |
| 701m.300.45° | Moulded | | 315 | 430 | |
| 701m.300.88° | Moulded | | 315 | 480 | |
| 701m.375.45° | Moulded | | 400 | 580 | |
| 701m.375.88° | Moulded | | 400 | 560 | |
| 551.500.45G | Glassed | | 500 | | |
| 551.500.88G | Glassed | | 500 | | |



704
554

FARMTUFF JUNCTIONS

| CODE | DESCRIPTION | A | B | C | D |
|--------------|-------------|------|-----|------|-----|
| 704m.175.45° | Moulded | 400 | 200 | 500 | 200 |
| 704m.175.88° | Moulded | 200 | 200 | 380 | 200 |
| 704m.225.45° | Moulded | 455 | 250 | 615 | 250 |
| 704m.225.88° | Moulded | 300 | 250 | 520 | 250 |
| 704m.300.45° | Moulded | 600 | 315 | 712 | 315 |
| 704m.300.88° | Moulded | 320 | 315 | 600 | 315 |
| 554.400.45G | Glassed | 750 | 400 | 1100 | 400 |
| 554.400.88G | Glassed | 500 | 400 | 980 | 400 |
| 554.500.45G | Glassed | 1100 | 500 | 1250 | 500 |
| 554.500.88G | Glassed | 600 | 500 | 1000 | 500 |



Reducing Junctions available on request

RURAL

8.1

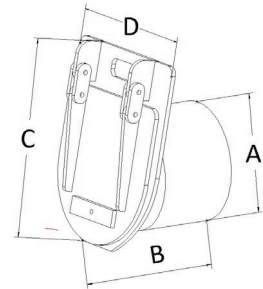


FLOODGATES – PVC

| CODE | SIZE | MATERIAL | A | B | C | D |
|---------|--------|----------|-----|-----|-----|-----|
| 588.110 | 110.0D | PVC | 110 | 148 | 180 | 130 |
| 588.160 | 160.0D | PVC | 160 | | 270 | 200 |
| 588.200 | 200.0D | PVC | 200 | | 340 | 270 |
| 588.250 | 250.0D | PVC | 260 | 304 | 360 | 360 |
| 588.315 | 315.0D | PVC | 315 | 334 | 517 | 450 |
| 588.400 | 400.0D | PVC | 400 | | 600 | 520 |
| 588.500 | 500.0D | PVC | 500 | | 695 | 630 |



588



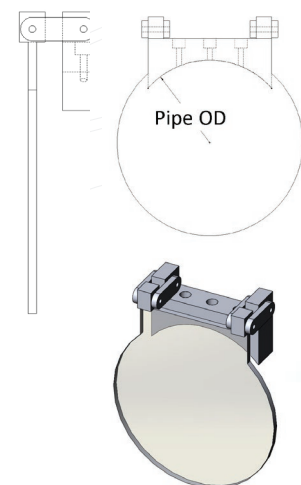
FLOODGATES – CONCRETE – PVC

| CODE | SIZE | MATERIAL | A | B | C | D |
|-----------------|--------|----------|-----|-----|-----|-----|
| 588.225 spun | 280.0D | PVC | 280 | 300 | 520 | 450 |
| 588.300 spun | 360.0D | PVC | 360 | 410 | 600 | 520 |
| 588.375 spun | 445.0D | PVC | 440 | 460 | 695 | 630 |
| 588.450 spun ** | 535.0D | PVC | 450 | | 695 | 630 |

** Internal fit only. Confirmation of pipe ID to be supplied at time of order

FLOODGATES – CONCRETE – PE

| CODE | SIZE | MATERIAL | A | B | C | D |
|---------------|-------------|----------|---|---|---|---|
| 588.525 spun | 6150D | PE | | | | |
| 588.600 spun | 6980D | PE | | | | |
| 588.675 spun | 7790D | PE | | | | |
| 588.750 spun | 8640D | PE | | | | |
| 588.825 spun | 9440D | PE | | | | |
| 588.900 spun | 1029-10420D | PE | | | | |
| 588.1050 spun | 1194-12190D | PE | | | | |
| 588.1200 spun | 1347-13710D | PE | | | | |



Bolt on Type
Headwall Types are available on request

RURAL

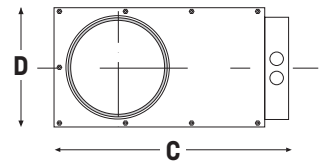
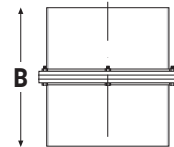
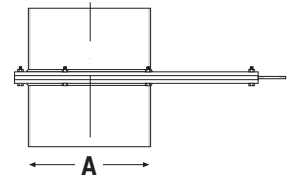


600

SLIDE VALVE

Not suitable for applications where head pressure is possible

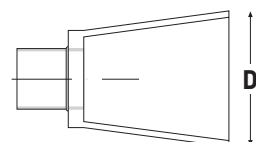
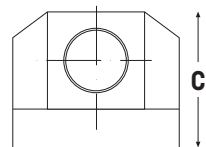
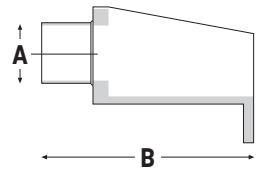
| CODE | DESCRIPTION | A | B | C | D |
|-----------|--------------------|-----|-----|-----|-----|
| 600.175mm | 200mm Gravity Only | 210 | 257 | 492 | 262 |
| 600.225mm | 250mm Gravity Only | 250 | 311 | 590 | 320 |
| 600.300mm | 315mm Gravity Only | 315 | 345 | 722 | 380 |
| 650.100mm | 110mm Moulded | 110 | 350 | | 132 |
| 650.150mm | 160mm Moulded | 160 | 510 | | 172 |



580

WINGWALLS

| CODE | SIZE | MATERIAL | A | B | C | D |
|---------|-------|---------------|-----|------|-----|-----|
| 580.160 | 150mm | PVC | 160 | 1063 | 860 | 210 |
| 580.200 | 175mm | PVC | 200 | 1063 | 860 | 210 |
| 580.250 | 225mm | PVC | 250 | 1063 | 860 | 210 |
| 580.315 | 300mm | PVC | 315 | 1063 | 860 | 210 |
| 580.225 | 225mm | Spun Concrete | 293 | 1063 | 860 | 210 |
| 580.300 | 300mm | Spun Concrete | 363 | 1063 | 860 | 210 |



RURAL



HDPE SLOTTED EFFLUENT PIPE[®]

HDPE lilac pipe slotted for effluent use
Manufactured in accordance with AS/NZS 1547



900

STANDARD SLOT CONFIGURATION

| CODE | DESCRIPTION | SLOT WIDTH | SLOT SPACINGS | PIPE Ø |
|------------|--|------------|---------------|--------|
| 900.90.6.E | Lilac HDPE Effluent Pipe x 6.0 metre long with socket (52 lengths per pallet) cost per metre | 8 | 300 | 90 |

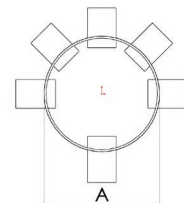
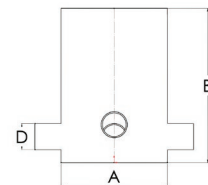
AS/NZS 1547:2000

DISTRIBUTION BOX – EVEN FLOW

| CODE | DESCRIPTION | A | B | C | D |
|-------------------------------------|-----------------------------|-----|-----|-----|--------|
| 300 Ø Chamber – Includes Lid | | | | | |
| 3703.100/90EFLO | 90mm or 100mm 3 Way | 300 | 900 | | 90/110 |
| 450 Ø Chamber | | | | | |
| 3700.100EFLO&LID | 100mm Multi Outlet to 5 Way | 465 | 655 | 465 | 110 |
| 3706.100EFLO&LID | 100mm 6 Way | 465 | 655 | 465 | 110 |



3703



RURAL



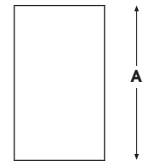
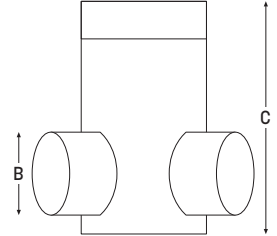
500

DISTRIBUTION BOX – RISERS / LID

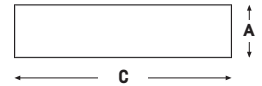
| CODE | DESCRIPTION | A | B | C | D |
|---------|---|-----|-----|-----|---|
| 500.450 | Distribution Box Riser 450mm x 600mm | 655 | 465 | 465 | |
| 520.450 | Distribution Box Lid 450mm | 70 | 485 | 465 | |



← A →



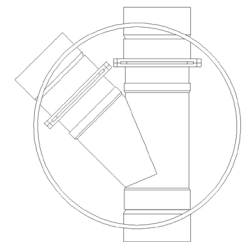
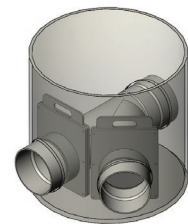
← B,C →



3700

SPLITTER VALVE

| CODE | DESCRIPTION | A | B | C | D |
|----------------|--------------------------------|-----|-----|-----|---|
| 3700.Split/100 | 100mm Distribution Valve 3 Way | 166 | 110 | 308 | |
| 3700.Split/150 | 150mm Distribution Valve 3 Way | 205 | 160 | 375 | |
| 3700.Split/175 | 175mm Distribution Valve 3 Way | 255 | 200 | 500 | |
| 3700.Split/225 | 225mm Distribution Valve 3 Way | 320 | 250 | 647 | |
| 3700.Split/300 | 300mm Distribution Valve 3 Way | 405 | 315 | 690 | |



3702

RAINWATER DIVERSION VALVE

| CODE | DESCRIPTION | A | B | C | D |
|------------------|---|-----|-----|-----|-----|
| 3702.150.W.Slide | 150mm Rainwater Valve – 2 Way Wye – Left or Right Hand | 600 | 600 | 600 | 160 |

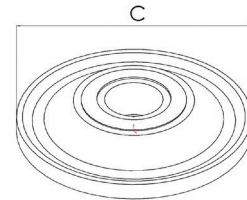
RURAL

8.5



SPRINKLER SURROUND – EFFLUENT OR WATER

| CODE | DESCRIPTION | A | B | C | D |
|--------------|--|-----|---|-----|---|
| Surround 500 | Effluent Sprinkler Surround Option of Colours | 100 | | 600 | |

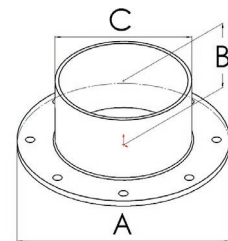


STUB FLANGES

| CODE | DESCRIPTION | A | B | C | D |
|------------|--|-----|-----|-----|---|
| 826.175 | Single Stub Flange | 335 | 115 | 200 | |
| 826.225 | Single Stub Flange | 405 | 134 | 250 | |
| 826.300 | Single Stub Flange | 455 | 155 | 315 | |
| 826.375 | Single Stub Flange | 580 | 173 | 400 | |
| 5525A200G | Assembled Full Faced Flange – Glassed | 335 | 250 | 200 | |
| 5525A.250G | Assembled Full Faced Flange – Glassed | 405 | 288 | 250 | |
| 5525A.315G | Assembled Full Faced Flange – Glassed | 455 | 330 | 315 | |
| 5525A.400G | Assembled Full Faced Flange – Glassed | 580 | 366 | 400 | |



5525



FLOOD WASH SYSTEMS

Flood Wash Systems are a high volume, low pressure cleaning system for any cowshed, feed pad or herd barn.

With the ability to clean a pad within a matter of minutes, it allows more time for farmers to achieve more efficiency in their day.

The flood wash systems delivers water via a manifold pipe laid under the concrete yard and has riser pipes evenly spaced along the length finishing at ground level.

