



## PRESSURE & DUCTING INDEX

---

Pressure Formed Bends – SCJ	7.1
Pressure Formed Bends – RRJ	7.3
Pressure Plain Couplings – RRJ	7.5
Pressure Stub Flanges – SCJ	7.5
Electrical Ducts Formed Bends – SCJ	7.6
Telecommunication Duct Formed Bends – SCJ	7.7
Telecommunication & Electrical Duct Adapters – SCJ	7.8



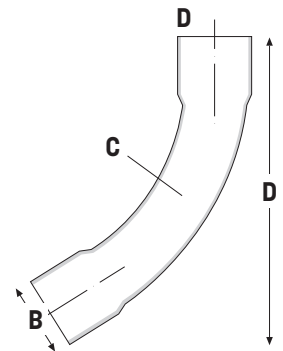
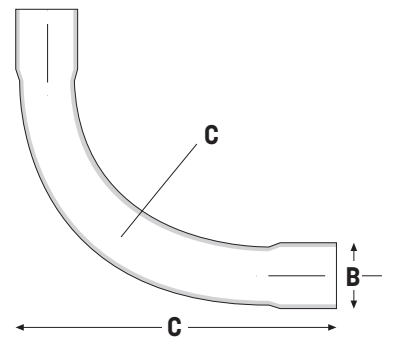


**PRESSURE FORMED BENDS – SCJ**

D = PN12 rated (174 psi), C = PN9 rated (130 psi)

	ANGLE	A	B	C	D
803.15D.11 or 22	11° or 22°		21	80	
803.20D.11 or 22	11° or 22°		26	100	140
803.25D.11 or 22	11° or 22°		33	150	200
803.32D.11 or 22	11° or 22°		42	115	
803.40D.11 or 22	11° or 22°		48	150	
803.50D.11 or 22	11° or 22°		60	210	260
803.65D.11 or 22	11° or 22°		75	260	
803.80D.11 or 22	11° or 22°		89	260	385
803.100D.11 or 22	11° or 22°		114	340	385
803.125D.11 or 22	11° or 22°				
803.150D.11 or 22	11° or 22°		160	500	980
803.175D.11 or 22	11° or 22°		200	600	
803.200D.11 or 22	11° OR 22°		225	600	
803.225C.11 or 22	11° or 22°		250	700	
803.250C.11 or 22	11° OR 22°				

AS/NZS 1477:2010

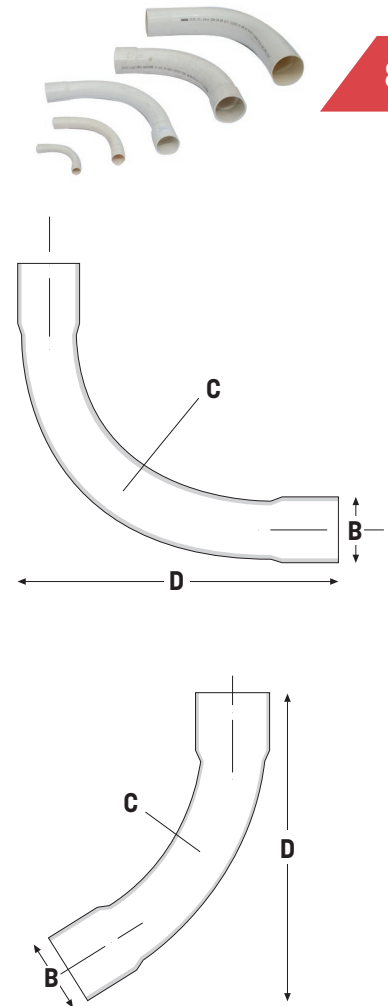




## PRESSURE FORMED BENDS – SCJ

D = PN12 rated (174 psi), C = PN9 rated (130 psi)

CODE	ANGLE	A	B	C	D
803.15D.45	45°		21	80	165
803.20D.45	45°		26	100	215
803.25D.45	45°		33	150	280
803.32D.45	45°		42	115	235
803.40D.45	45°		48	150	250
803.50D.45	45°		60	210	340
803.65D.45	45°		75	260	350
803.80D.45	45°		89	260	460
803.100D.45	45°		114	340	680
803.125D.45	45°				
803.150D.45	45°		160	500	
803.175D.45	45°		200	600	
803.200D.45	45°		225	600	
803.225C.45	45°		250	700	
803.250C.45	45°				
803.15D.90	90°		21	80	135
803.20D.90	90°		26	100	170
803.25D.90	90°		33	150	190
803.32D.90	90°		42	115	210
803.40D.90	90°		48	150	220
803.50D.90	90°		60	210	390
803.65D.90	90°		75	260	410
803.80D.90	90°		89	260	440
803.100D.90	90°		114	340	455
803.125D.90	90°				655
803.150D.90	90°		160	500	980
803.175D.90	90°		200	600	
803.200D.90	90°		225	600	
803.225C.90	90°		250	700	
803.250C.90	90°				



AS/NZS 1477:2010

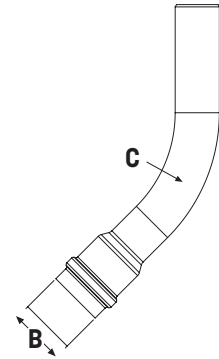


**PRESSURE FORMED BENDS – RRJ**

D = PN12 rated (174 psi), C = PN9 rated (130 psi)



CODE	ANGLE	A	B	C	D
Z803.50D.11 or 22	11° or 22°		60.4	210	
Z803.65D.11 or 22	11° or 22°		75.2	260	595
Z803.80D.11 or 22	11° or 22°		89.0	260	580
Z803.100D.11 or 22	11° or 22°		114	340	770
Z803.125D.11 or 22	11° or 22°				
Z803.150D.11 or 22	11° or 22°		160	500	1010
Z803.175D.11 or 22	11° or 22°		200	600	
Z803.200D.11 or 22	11° or 22°		225	600	
Z803.225C.11 or 22	11° or 22°		250	700	
Z803.250C.11 or 22	11° or 22°				
Z803.300C.11 or 22	11° or 22°				
Z803.375C.11 or 22	11° or 22°				
Z803.450C.11 or 22	11° or 22°				



Rings included  
 AS/NZS 1477:2010



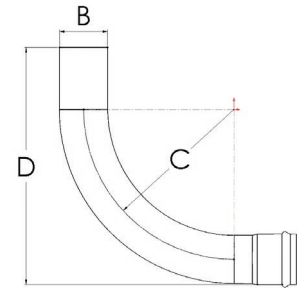
## PRESSURE FORMED BENDS – RRJ



Z803

D = PN12 rated (174 psi), C = PN9 rated (130 psi)

CODE	ANGLE	A	B	C	D
Z803.50D.45	45°		60.4	210	440
Z803.65D.45	45°		75.2	260	
Z803.80D.45	45°		89.0	260	745
Z803.100D.45	45°		114	340	730
Z803.125D.45	45°				
Z803.150D.45	45°		160	500	1085
Z803.175D.45	45°		200	600	
Z803.200D.45	45°		225	600	
Z803.225C.45	45°		250	700	1495
Z803.250C.45	45°				
Z803.300C.45	45°				
Z803.375C.45	45°				
Z803.450C.45	45°				



Z803.50D.90	90°		60.4	210	
Z803.65D.90	90°		75.2	260	410
Z803.80D.90	90°		89.0	260	
Z803.100D.90	90°		114	340	615
Z803.125D.90	90°				
Z803.150D.90	90°		160	500	900
Z803.175D.90	90°		200	600	
Z803.200D.90	90°		225	600	
Z803.225C.90	90°		250	700	
Z803.250C.90	90°				
Z803.300C.90	90°				
Z803.375C.90	90°				
Z803.450C.90	90°				

Rings included  
 AS/NZS 1477:2010

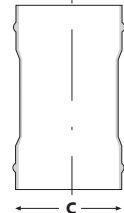


**Z810**

**PRESSURE PLAIN COUPLINGS – RRJ**

CODE	DESCRIPTION	A	B	C	D
Z810.100	PN15 Rated			114	
Z810.150	PN15 Rated			160	
Z810.175	PN12 Rated			200	
Z810.200	PN12 Rated			225	
Z810.225	PN12 Rated			250	

Rings included  
AS/NZS 1477:2010

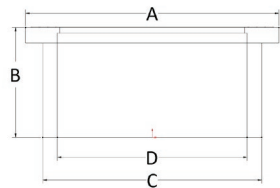


**826**

**PRESSURE STUB FLANGES – SCJ**

CODE	DESCRIPTION	A	B	C	D
826.110	DWV Stub Flange	150	70	131	110
826.150	PN10 Pressure Stub Flange	215	95	184	160
826.200	PN10 Pressure Stub Flange	275	130	248	225
826.225	PN10 Pressure Stub Flange	308	145	274	250
826.300	PN10 Pressure Stub Flange	378	180	348	315

Rings included  
AS/NZS 1477:2010



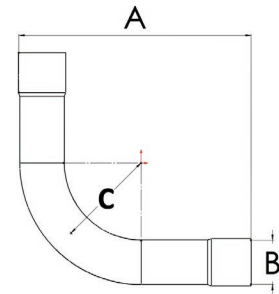


## ELECTRICAL DUCTS FORMED BENDS – SCJ



2703

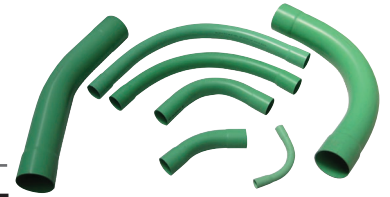
CODE	OTHER RADIUS AVAILABLE - C (MM)	A	B	C	D
2703.E.32.11°			36.3	100	215
2703.E.32.22°			36.3	100	215
2703.E.32.45°			36.3	100	210
2703.E.32.90°			36.3	100	191
2703.E.40.11°			43.0	150	218
2703.E.40.22°			43.0	150	218
2703.E.40.45°			43.0	150	215
2703.E.40.90°			43.0	150	203
2703.E.50.11°	400/600/900/1200/1500		55.9	150	144
2703.E.50.22°	400/600/900/1200/1500		55.9	150	142
2703.E.50.45°	400/600/900/1200/1500		55.9	150	280
2703.E.50.90°	400/600/900/1200/1500		55.9	150	266
2703.E.65.11°	400/600/900/1200/1500		68.7	200	290
2703.E.65.22°	400/600/900/1200/1500		68.7	200	300
2703.E.65.45°	400/600/900/1200/1500		68.7	200	455
2703.E.65.90°	400/600/900/1200/1500		68.7	200	430
2903.MD.80.11°R	600/900/1200/1500		82.6	250	455
2903.MD.80.22°R	600/900/1200/1500		82.6	250	455
2903.MD.80.45°R	600/900/1200/1500		82.6	250	460
2903.MD.80.90°R	600/900/1200/1500		82.6	250	460
2903.MD.100.11°R	600/900/1200/1500/2400/3000		110	350	488
2903.MD.100.22°R	600/900/1200/1500/2400/3000		110	350	497
2903.MD.100.45°R	600/900/1200/1500/2400/3000		110	350	560
2903.MD.100.90°R	600/900/1200/1500/2400/3000		110	350	560
2903.MD.150.11°R	900/1200/1500/2400/3000		160	500	770
2903.MD.150.22°R	900/1200/1500/2400/3000		160	500	770
2903.MD.150.45°R	900/1200/1500/2400/3000		160	500	930
2903.MD.150.90°R	900/1200/1500/2400/3000		160	500	920



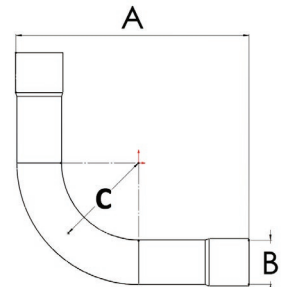
For other radius's, add R and radius size at the end of the code -  
i.e. 2903.MD.150.45R1500  
For Salmon colour, add 'S' at end of the code  
Heavy Duty bends are also available



## TELECOMMUNICATION DUCT FORMED BENDS – SCJ



CODE	DESCRIPTION	A	B	C	D
TCB.20.22.270	Green PVC		26	100	
TCB.20.45.270	Green PVC		26	100	
TCB.20.45.500	Green PVC		26	300	
TCB.20.90.300	Green PVC		26	100	190
TCB.20.90.300W	White PVC		26	100	190
TCB.20.90.500	Green PVC		26	240	310
TCB.20.90.500W	White PVC		26	240	310
TCB.20.90.660	Green PVC		26	300	
TCB.20.90.800	Green PVC		26	400	
TCB.50.11.300	Green PVC		60	150	281
TCB.50.22.300	Green PVC		60	150	295
TCB.50.22.600	Green PVC		60	250	568
TCB.50.45.300	Green PVC		60	150	314
TCB.50.45.500	Green PVC		60	200	
TCB.50.45.750	Green PVC		60	350	671
TCB.50.90.400	Green PVC		60	150	310
TCB.50.90.750	Green PVC		60	350	
TCB.50.90.1000	Green PVC		60	350	
TCB.50.90.1200	Green PVC		60	600	
TCB.50.90.1800	Green PVC		60	900	
TCB.100.11.600	Green PVC		110	350	
TCB.100.22.600	Green PVC		110	350	
TCB.100.22.750	Green PVC		110	350	
TCB.100.22.1000	Green PVC		110	900	
TCB.100.45.600	Green PVC		110	330	
TCB.100.45.850	Green PVC		110	350	560
TCB.100.45.1200	Green PVC		110	600	
TCB.100.45.1500	Green PVC		110	900	
TCB.100.45.2000	Green PVC		110	1500	
TCB.100.90.800	Green PVC		110	350	560
TCB.100.90.1200	Green PVC		110	400	
TCB.100.90.1500	Green PVC		110	600	
TCB.100.90.2000	Green PVC		110	900	1240



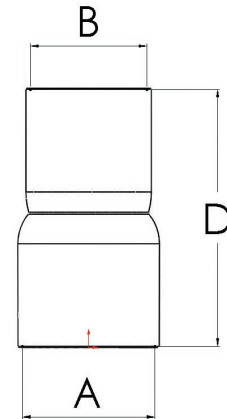




## TELECOMMUNICATION & ELECTRICAL DUCT ADAPTERS – SCJ

2724

CODE	DESCRIPTION	A	B	C	D
2724.50.20	Duct to Telecom Adapter – White	55	24		
2724.50.50	Duct to Polyethylene Adapter – White	55	51		115
2724.50.50Con	Duct to Conduit Adapter				
2724.63.50	Polyethylene to Duct Adapter – White	63	55		130
2724.63.63	Polyethylene to Polyethylene Coupling – White	63	63		115
TC.63.50	Polyethylene to Telecom Adapter – White	63	60.1		130
TC.110.100	Telecom to Telecom Coupling – Green	110	110		170
2724.50.50R	Polyethylene to Duct (Spigot) Adapter – Red	50	51		145
2724.50.50CVR	Polyethylene to Duct Adapter – Red	50	55		145
2724.63.50R	Polyethylene to Duct Adapter – Red	63	55		135
TC100.50	Telecom to Telecom Adapter – White	110	60.1		210
TC50.50	Telecom to Telecom Coupling – Green	60.1	60.1		240
TC50.20	Telecom Single Outlet Adapter	60.1	24		145
TC50.20.20	Telecom Double Outlet Adapter	60.1	24x2		155
2710.50	Duct Coupling – Orange	55	55		
2710.100	Duct Coupling – Orange	110	110		145
2710.150	Duct Coupling – Orange	160	160		
2715.50	Duct Bell Mouth – Orange				
2715.65	Duct Bell Mouth – Orange				
2715.80	Duct Bell Mouth – Orange				
2715.100	Duct Bell Mouth – Orange				
2715.150	Duct Bell Mouth – Orange				
2715.175	Duct Bell Mouth – Orange				
2715.225	Duct Bell Mouth – Orange				
10013102	Telecom Repair Sleeve	110	110		2000
10013103	Telecom Repair Sleeve	62	62		2000
10013104	Telecom Repair Sleeve	62	62		280



PRESSURE & DUCTING



